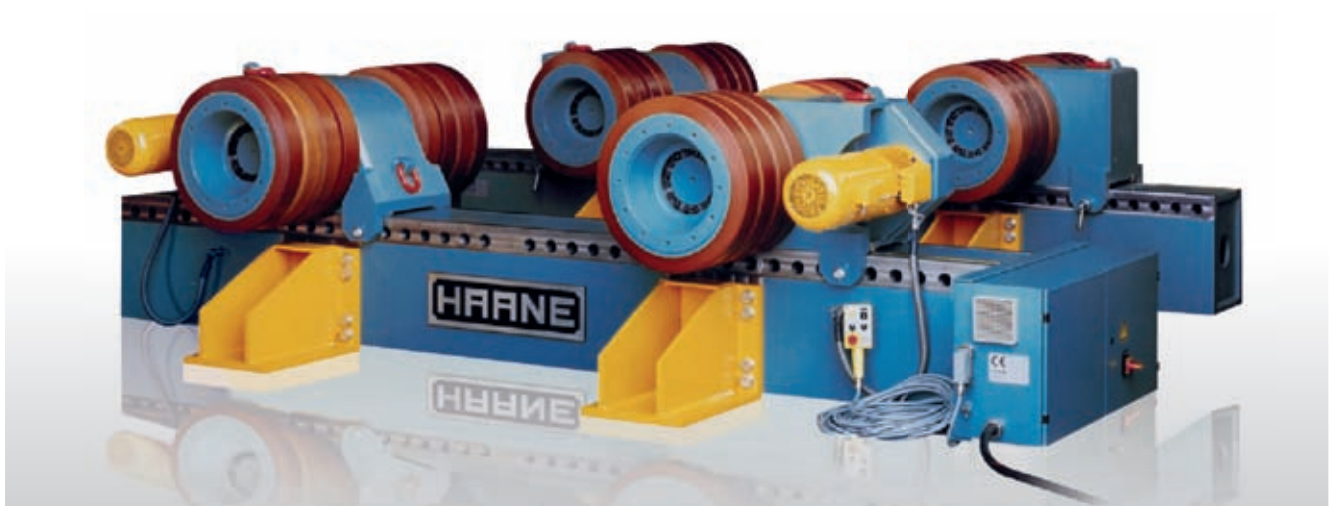


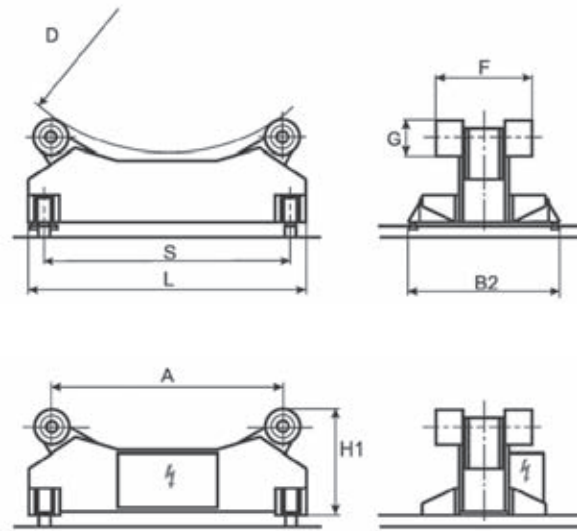


5. ROLLER STANDS

- Externally plugged on and quickly exchangeable rollers for universal applications, large support at the workpiece and simple exchange of torn Vulkollan tyres.
- New multifunctional rollers (registered design protection no. 69007082.8) including friction rings which can easily be removed and bolted from the outside for the increasing the traction or flanged wheels for a simplified axial fixing of the workpieces to be machined.
- New, high-performance drive units offering a substantially increased peripheral force and high precision, improved efficiency, longevity and complete freedom from maintenance.
- Substantial reduction of non-productive times thanks to fast traverse of 9.0 m/min.
- All roll axles equipped with precise, maintenance-free rolling bearings.
- Post designed to accommodate torsion forces including integrated swivel arms for the easy setting of the diameter of the workpieces to be machined.
- Optionally, stationary or movable design through new, patented return stands.
- The movable design can be retrofitted easily by using suitably designed return stands including pluggable wheels or wheel blocks.
- Same overall height for stationary and movable units.
- Double drive with operationally reliable synchronisation for a high degree of precision and an ideal load distribution of the drive units, both during part-load and full-load operation.
- Integrated pulse generator for precise feed speeds in the entire setting range.
- High degree of rest safety of the workpieces to be machined through a supporting angle of approx. 50°.



5.1. PRODUCTION SERIES BSN „SWIVEL ARM“



Roller stands		BSN 1500	BSN 2500	BSN 5000	BSN 8000	BSN 15000
Load	per unit kg/max.	1500	2500	5000	8000	15000
Workpiece	d ø /min. mm	80	80	80	120	120
	d ø /max. mm	2500	3000	3000	3500	4000
Distance betw. rollers	A mm	1125	1335	1345	1572	1810
	G mm	160	160	180	220	285
Roller width	F mm	295	295	420	490	660
	L mm	1170	1670	1700	1700	1700
Width	B1 mm	640	645	670	710	800
	B2 mm	770	775	800	840	930
Height	H1 mm	590	610	610	700	765
Gauge	S mm	1000	1500	1500	1500	1500
Wheel base	R mm	460	465	490	530	590
Peripheral force	N	2190	4375	8220	13630	21750
Servo drive	feed mm/ min	100-2000	100-2000	100-2000	100-2000	100-2000
	fast traverse m/ min	5	9	9	9	9

* Specifications subject to alterations



5.2. PRODUCTION SERIES BMS



Roller stands		BMS 20	BMS 30	BMS 40	BMS 50	BMS 60	BMS 80
Load	per unit t/max.	20	30	40	50	60	80
Workpiece	d ø /min. mm	500	500	600	600	700	700
	d ø /max. mm	5000	5000	6000	6000	7000	7000
Rollers ø	G mm	400	400	455	455	520	520
Roller width	F mm	120	150	150	200	200	250
Width	I mm	1000	1030	1150	1200	1450	1500
Height	E mm	700	700	780	780	925	925
Length	B mm	2800	2800	3340	3340	3870	3870
	C mm	3240	3240	3830	3830	4450	4450
Gauge	A mm	1500	1500	1500	1500	1500	1500
						2000	2000
Wheel base	H mm	660	690	765	815	980	1030
Peripheral force	standard N	28200	28200	33510	33510	48845	48845
	double drive N	56400	56400	67020	67020	97690	97690
Feed	continuously mm/min	110 - 2000	110 - 2000	130 - 2000	130 - 2000	130 - 2000	130 - 2000
	fast traverse m/min	11	11	13	13	13	13
Control range		1:100	1:100	1:100	1:100	1:100	1:100
Control accuracy	%	1	1	1	1	1	1
* Specifications subject to alterations							

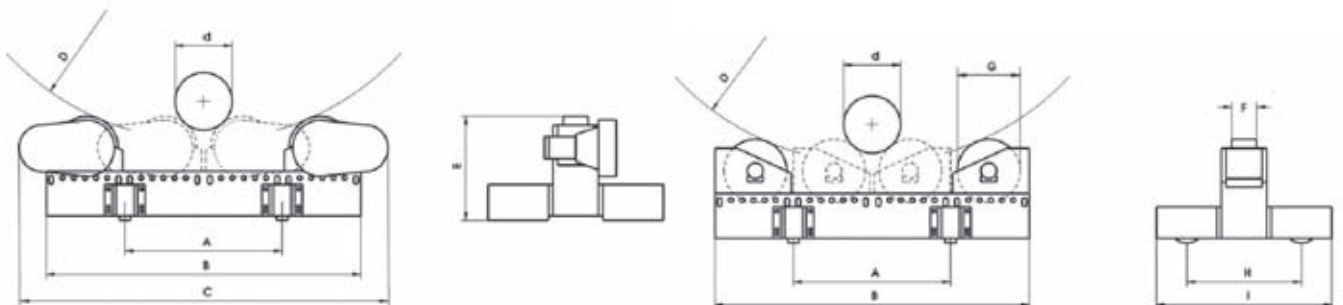
5.2. PRODUCTION SERIES BMS



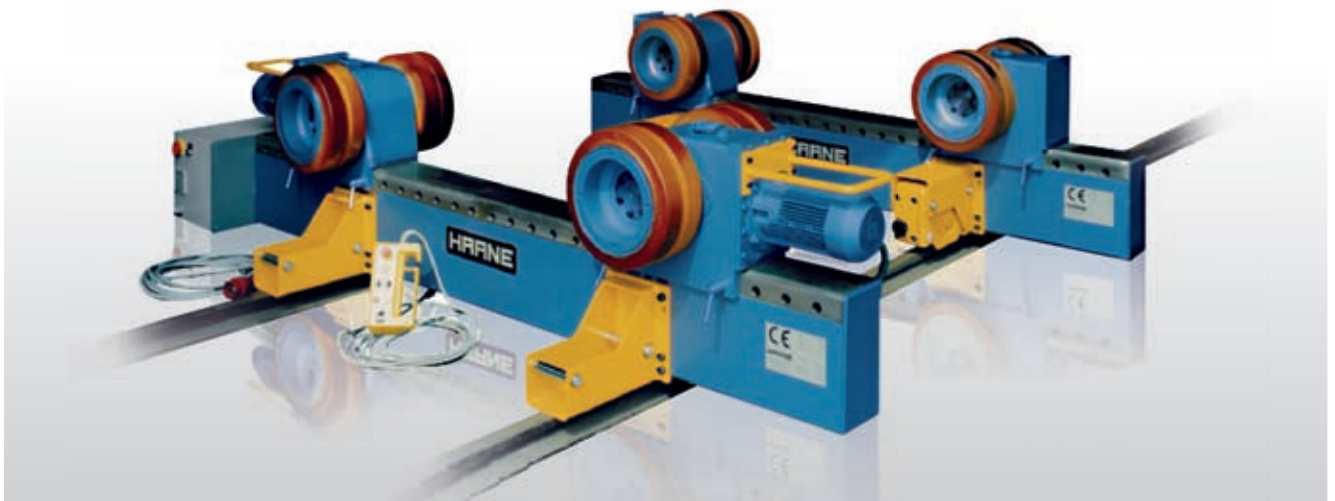
Roller stands		BMS 100	BMS 150	BMS 200	BMS 250	BMS 375	BMS 500
Load	per unit t/max.	100	150	200	250	375	500
Workpiece	d \varnothing /min. mm	900	900	950	950	1200	1200
	D \varnothing /max. mm	7000	7000	8000	8000	8000	8000
Rollers \varnothing	G mm	700	700	750	750	1000	1000
Roller width	F mm	280	400	420	550	600	800
Width	I mm	1800	2175	2340	2470	2725	3830
Height	E mm	1185	1315	1400	1400	1750	2150
Length	B mm	4100	4100	4700	4700	5100	5100
	C mm	4825	4825	5430	5430	6100	6100
Gauge	A mm	2000	2000	2000	2000	2000	2000
		2500	2500	3000	3000	3000	3000
Wheel base	H mm	1220	1475	1640	1770	1925	2630
Peripheral force	standard N	72570	72570	94400	94400	138000	138000
	double drive N	145140	145140	188800	188800	276000	276000
Torque	standard Nm	25400	25400	35400	35400	69000	69000
	double drive Nm	50800	50800	70800	70800	138000	138000
Feed	continuously mm/min	130 - 2000	130 - 2000	130 - 2000	130 - 2000	130 - 2000	130 - 2000
	fast traverse m/min	13	13	13	13	13	13
Control range		1:100	1:100	1:100	1:100	1:100	1:100
Control accuracy	%	1	1	1	1	1	1

* Specifications subject to alterations

5.2.1. DIMENSIONS



5.3. PRODUCTION SERIES BMB



Roller stands		BMB 20 000	BMB 25 000	BMB 30 000	BMB 40 000	BMB 50 000
Load	per unit kg/max.	20000	25000	30000	40000	50000
Workpiece	d ø /min. mm	200	200	200	250	250
	D ø /max. mm	5000	5000	5000	6000	6000
Distance betw. rollers max.	A mm	2290	2290	2290	2750	2750
Rollers ø	G mm	415	415	415	500	500
Roller width	Steel rolls F mm	430		430	500	
	Vullkolan rolls	620	710	800	980	1150
Width	B1 mm	1010	1010	1010	1240	1520
	B2 mm	1175	1175	1175	1440	1805
Height	H mm	810	810	810	945	1010
Length	L1 mm	3000	3000	3000	3600	3600
	L2 mm	3780	3890	3890	4680	4680
Gauge	S mm	1500	1500	1500	1500	1500
Wheel base	R mm	635	635	635	780	960
Peripheral force	single drive N	18000	26410	26410	36000	48000
	double drive N	36000	52820	52820	72000	96000
Servo drive	feed mm/min.	75 - 2000	75 - 2000	75 - 2000	75 - 2000	75 - 2000
	fast traverse m/min.	6	6	6	6	6

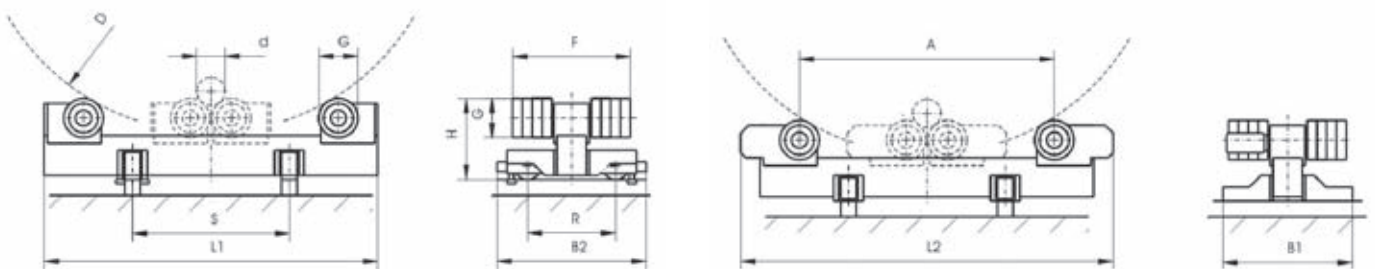
* Specifications subject to alterations



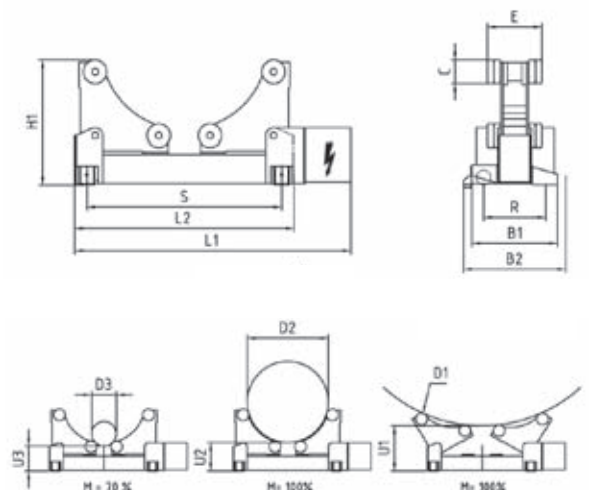
Roller stands		BMB 60 000	BMB 80 000	BMB 100 000	BMB 125 000
Load	per unit kg/max.	60000	80000	100000	125000
Workpiece	d ø/min. mm	250	650	650	650
	D ø/max. mm	6000	7000	7000	7000
Distance betw. rollers max.	A mm	2750	3235	3235	3235
Rollers ø	G mm	500	660	660	660
Roller width	Steel rolls F mm	570	765	840	935
	Vullkolan rolls	1310	1225	1420	1655
Width	B1 mm	1520	1710	1710	1950
	B2 mm	1805	1970	1970	2280
Height	H mm	1010	2000	2000	2000
Length	L1 mm	3600	4400	4400	4400
	L2 mm	4680	4950	4950	4950
Gauge	S mm	1500	2000	2000	2000
Wheel base	R mm	960	1130	1130	1250
Peripheral force	single drive N	48000	60600	60600	60600
	double drive N	96000	121200	121200	121200
Special design	single drive	72700			
	double drive	145450			
Servo drive	feed mm/min.	75 - 2000	150 - 2000	150 - 2000	150 - 2000
	fast traverse m/min.	6	15	15	15

* Specifications subject to alterations

5.3.1. DIMENSIONS



5.4. PRODUCTION SERIES RBZ



Roller stands			RBZ 4000	RBZ 8000	RBZ 12500	RBZ 20000
Load	per unit	kg/max.	4000	8000	12500	20000
Workpiece Ø		D1 mm	4000	4330	4450	5000
		D2 mm	1120	1200	1220	1340
		D3 mm	300	320	340	360
Workpiece lower edge		U1 mm	625	695	800	930
		U2 mm	390	435	540	640
		U3 mm	345	385	485	575
Rollers Ø		C mm	160	180	220	285
Roller width		E mm	295	420	490	620
Width		B1 mm	626	658	780	916
		B2 mm	756	788	912	1070
Height		H1 mm	865	955	1060	1220
Drive unit		L1 mm	2010	2080	2120	2345
Idling unit		L2 mm	1710	1690	1760	1910
Gauge		S mm	1500	1500	1500	1500
Wheel base		R mm	446	478	570	651
Peripheral force		N	4375	8220	13630	21750
Servo drive	feed	mm/min.	100 – 2000	100 – 2000	100 – 2000	100 – 2000
	fast traverse	m/min.	9	9	9	9

* Specifications subject to alterations